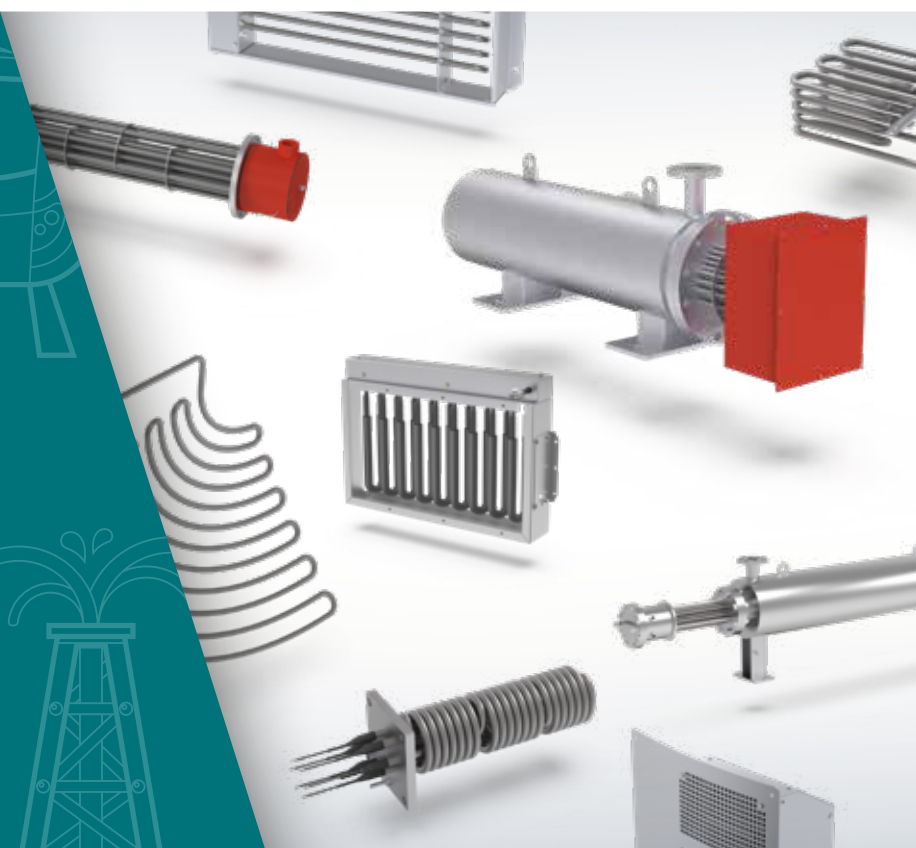
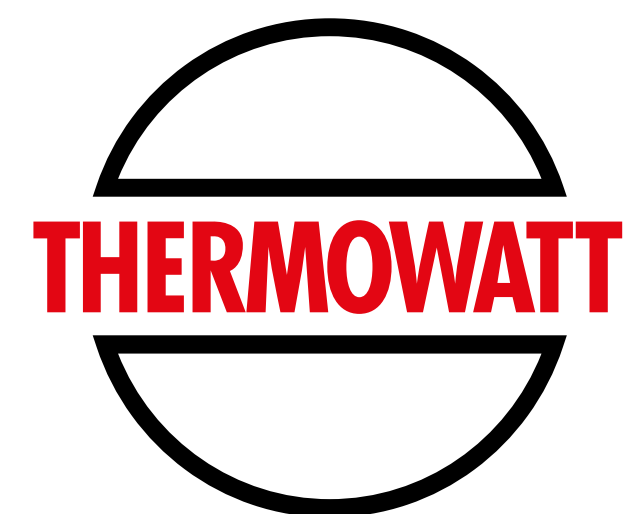




INDUSTRIAL APPLICATION



MADE IN ITALY



PROFESSIONAL

 MADE IN ITALY 

AN HISTORY MADE OF FLEXIBILITY AND ATTENTION TO DETAILS

Founded at the beginning of the 50s, Thermowatt continues to maintain the tradition and passion for products 100% Made in Italy, constantly innovating its production methods to satisfy and anticipate market needs.

Thermowatt is now one of the market leaders in the production of heating elements and thermostats for electric appliances for domestic and professional applications, and is among the most dynamic component manufacturing groups worldwide.

The quality of Thermowatt products and reliability of its services represent today an important foundation for more than 500 clients in more than 100 countries worldwide.

Attention to client's needs, research and development, production processes and continuous improvement are an integral part of the culture of Thermowatt employees.

The company operates from its Italian headquarters in Arcevia (head office and main production plant), Follina (DhE – Professional and Industrial applications), its China production plant in Wuxi (production site for Asia Pacific market) and its Serbian production plant in Svilajnac, with the most advanced health, safety, environmental and quality standards being followed at all sites.

OUR PHILOSOPHY: STRIVE FOR TOTAL QUALITY

The future is reality at Thermowatt, every day. From its laboratories, where highly skilled specialists work, new products and processes are continually developed and it is these innovations which have made Thermowatt brand well known throughout the world.

The company continuously develops dedicated projects to implement precise and reliable manufacturing standards, always at the edge of the technology and able to answer to customers' daily requests.

Thermowatt works alongside its clients to offer the best supply chain solutions and developing tailor made products, which inspire innovative ideas to cope with changing market conditions.

For Thermowatt quality goes beyond the product. This represents a total approach for the company applied to the entire process: from design and manufacturing to raw material selection, homologation testing, in line checks and statistic tests to after sales support.



A photograph of a modern, multi-story industrial building with large glass windows and a dark facade. The Thermowatt logo is visible on the upper part of the building.

**WHATEVER YOUR BUSINESS IS, THERMOWATT
SUPPLIES THE IDEAL APPLIANCE FOR IT.**

A close-up photograph of a large pile of small, cylindrical plastic granules in various colors: pink, blue, and green. A clear glass tube is lying horizontally across the granules, with some granules inside it.

PLASTIC

A photograph of a large industrial manufacturing facility. The scene shows complex machinery, including rollers and conveyor systems, with blue and grey components. The floor is polished and reflective.

MANUFACTURING PROCESS

A photograph of a renewable energy farm. In the foreground, there are rows of solar panels tilted towards the sun. In the background, several white wind turbines are visible against a clear blue sky with a few clouds. The ground is covered with yellow wildflowers.

POWER GENERATION

A photograph of a high-speed train, likely a Shinkansen, moving rapidly. The train is white with a blue stripe and is shown in motion, with blurred background lines suggesting speed. The lighting is bright and warm.

RAILWAY AND TRANSPORT

A photograph of an industrial oil and gas refinery at dusk or dawn. The scene is filled with complex piping, storage tanks, and distillation columns. Smoke or steam is rising from several points, and the sky is a mix of orange, pink, and blue.

OIL & GAS



<u>PLASTIC</u>	8
<u>MANUFACTURING PROCESS</u>	10
<u>POWER GENERATION</u>	12
<u>RAILWAY AND TRANSPORT</u>	14
<u>OIL & GAS</u>	15

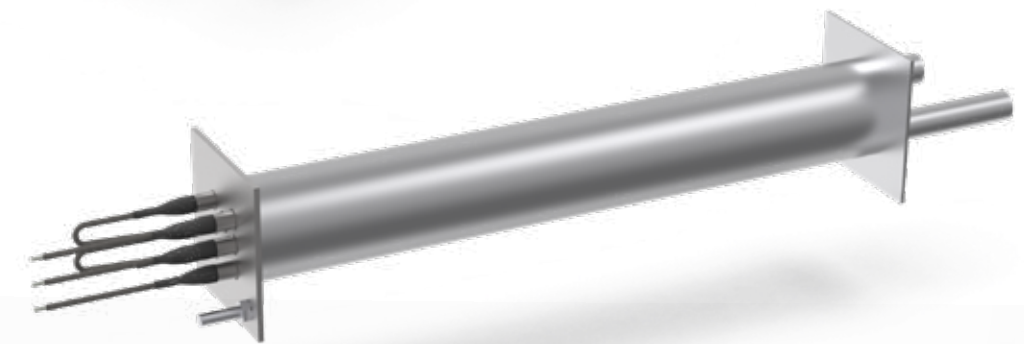
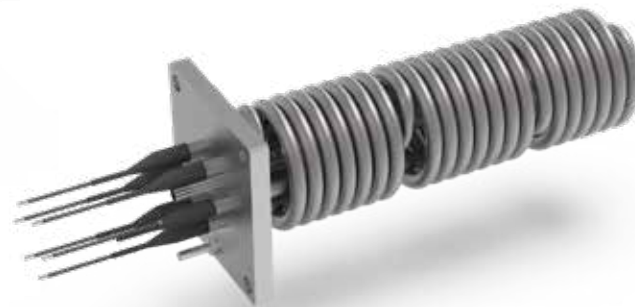
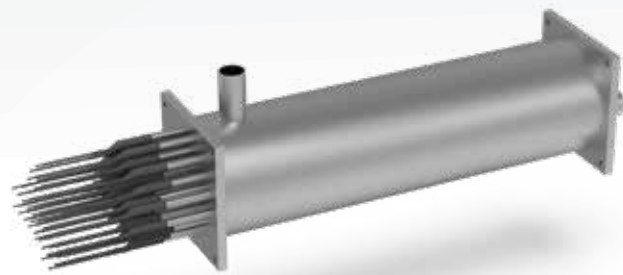
PLASTIC

APPLICATIONS

- \ DRYERS
- \ TEMPERATURE CONTROL UNITS
- \ ANCILLARY AND GRANULES TRANSPORT

PRODUCTS

- \ Special air Heaters, sheathed and finned suitable to dry air and products and regenerate filters;
- \ Duct heaters finned and sheathed elements to pre heat and heat air and plastic granules;
- \ Inline Blowers to heat air up to 350°C.
- \ Flanged immersion heaters with high watt density for water, suitable also for pressurized water.
Low watt density and high temeprature for Thermal Oil;
- \ Screw plug immersion heaters.





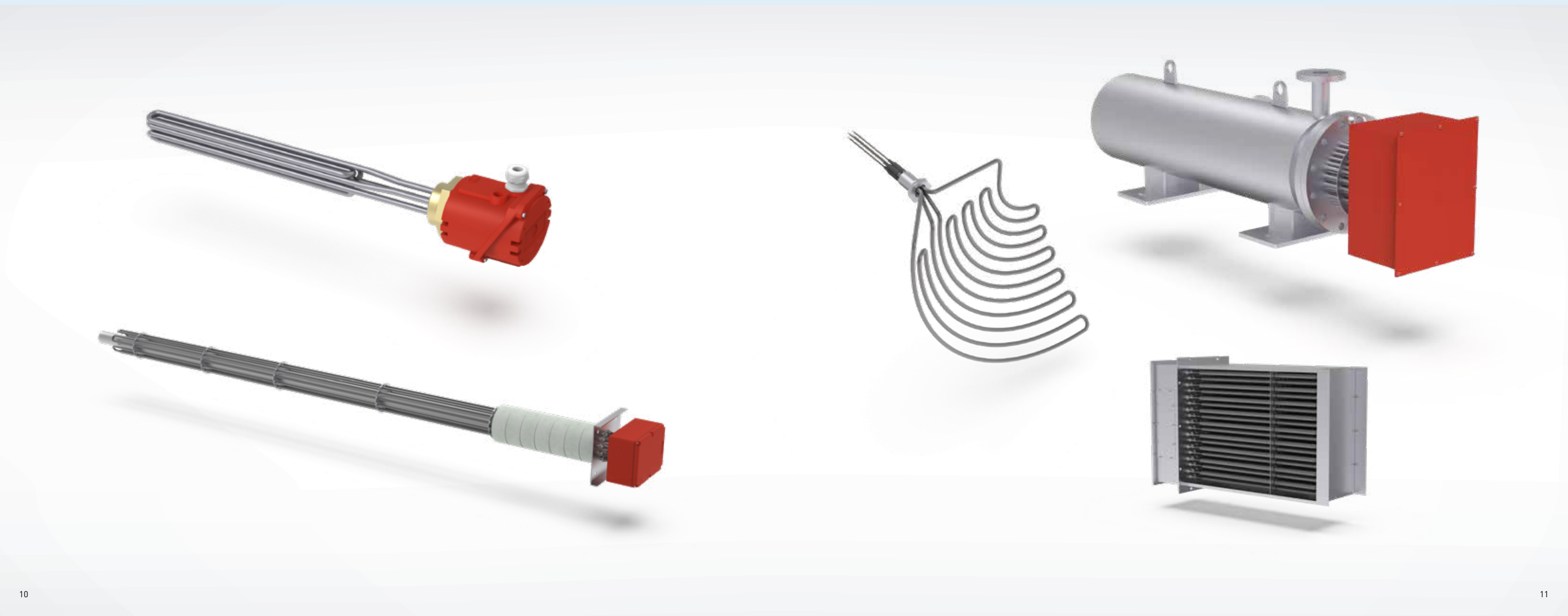
MANUFACTURING PROCESS

APPLICATIONS

- \ THERMAL TREATMENTS OVENS
- \ PACKAGING MACHINES
- \ TEXTILE MACHINERY
- \ PRINTING MACHINERY
- \ AUTOCLAVES
- \ STEAM GENERATORS
- \ HYDRAULIC UNITS
- \ TECHNICAL GASSES PRODUCERS
- \ OPHTALMIC MACHINERY

PRODUCTS

- \ Special air heaters using finned or plain elements, purpose designed heaters for applications using conduction, convection or long wave IR radiation;
- \ Duct heaters manufactured with finned elements and sheathed rod elements for processes, heating by forced hot air;
- \ Flanged heaters for liquid and gasses design up to high temperature according to PED directive;
- \ In line heaters for liquid or gassed up to high temperature and designed according to PED directive;
- \ Screw plug heaters to heat up liquid or gasses, it is possible to design them for high pressure.





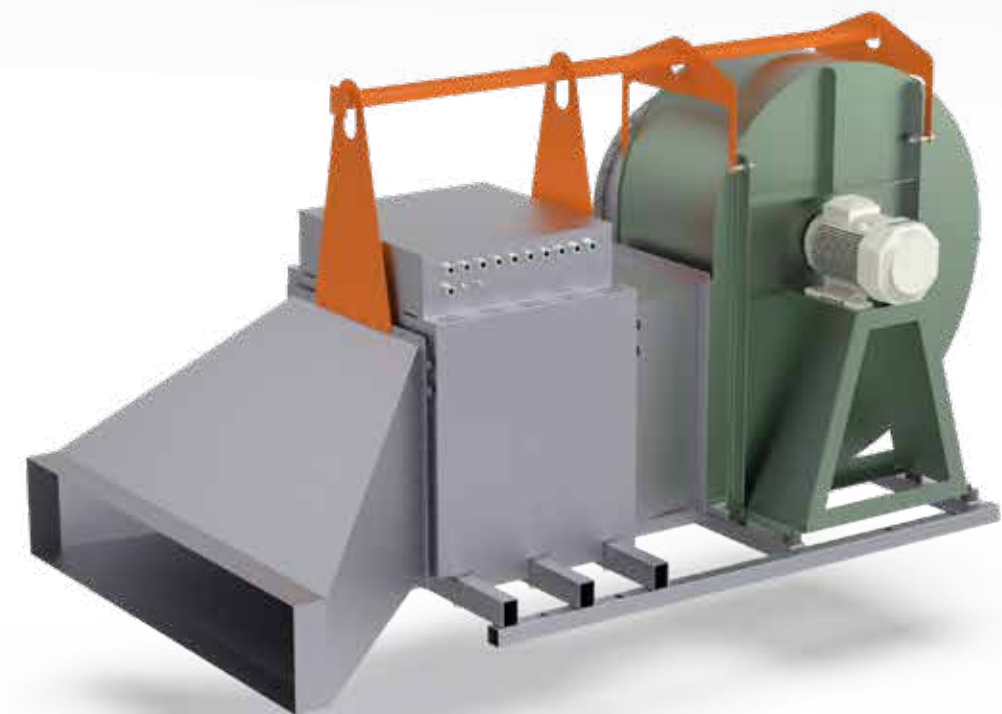
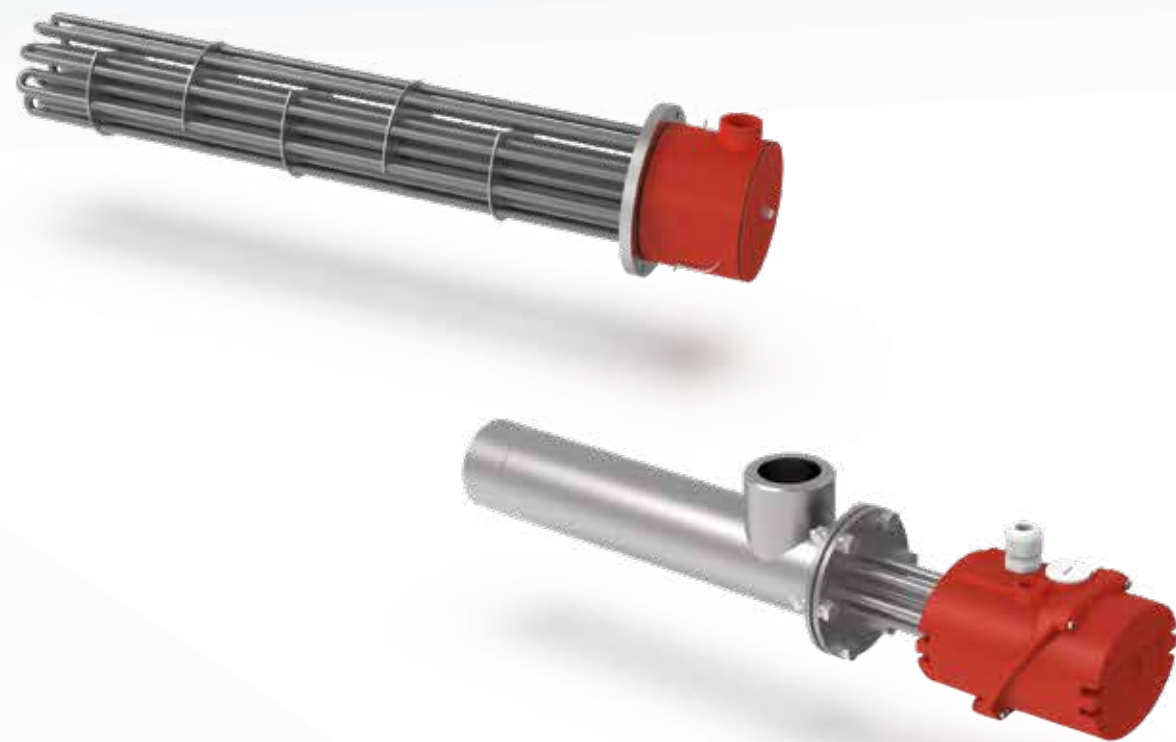
POWER GENERATION

APPLICATIONS

- \ LOAD BANKS
- \ CONVERTER COOLER
- \ GEARBOXES
- \ BRAKING RESISTORS
- \ ANCILLIARY
- \ SALT MELTING FOR THERMAL TRANSMISSION
- \ SUPERHEATER FOR STEAM
- \ AIR INTAKE HEATING FOR GAS TURBINE
- \ HEAVY OIL PRE HEATING

PRODUCTS

- \ Air heaters for ancillary services in power plants engines and wind turbine;
- \ Duct heaters sheathed and finned in the power plant and suitable as breaking resistors and load banks;
- \ Heating and ventilating systems used as loadbanks for bio generators, diesel generators, turbo gas generators and wind turbines;
- \ Flanged heaters immersed in water used as loadbanks to dissipate the excess of power generated;
- \ Flanged heaters to heat melt salts in the thermal solar plants;
- \ Inline heaters for loadbanks to heat melt salts in the thermal solar plants. Heaters up to 550°C according to PED directive;
- \ In line heaters and flanged heaters to heat up heavy oil before combustion;
- \ Duct heaters to heat up the intaken air in the gas turbine.





RAILWAY AND TRANSPORT

APPLICATIONS

- \ ROLLING STOCK HVAC
- \ ROLLING STOCK ANCILLARY
- \ INFRASTRUCTURE SIGNALING SYSTEMS

PRODUCTS

- \ Air heaters finned and sheathed rod to heat air for services in the rolling stocks;
- \ Immersion heaters for water for services;
- \ Duct heaters finned and sheathed in the air handling units in the rolling stocks;
- \ Special heaters and braking resistors for rolling stocks.



OIL & GAS

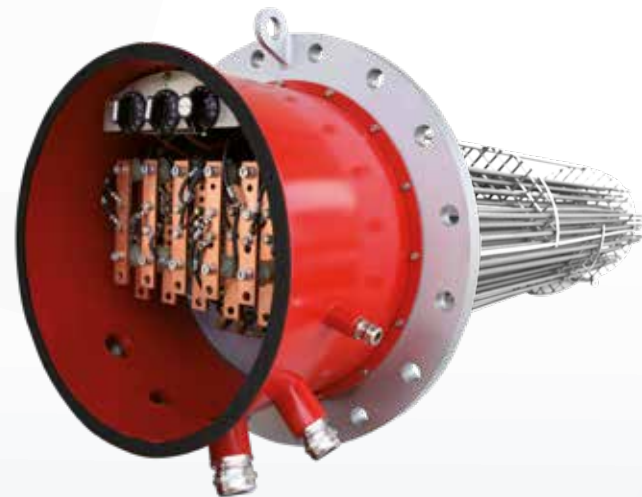
APPLICATIONS

- \ TECHNICAL GASSES PRODUCER IN HAZARDOUS AREAS
- \ REACTORS IN HAZARDOUS AREA
- \ GAS DISTRIBUTORS IN HAZARDOUS AREA
- \ HEAT EXCHANGERS IN HAZARDOUS AREA

PRODUCTS

- \ Air heaters for ancillary;
- \ Duct heaters sheathed and finned for technical lockers;
- \ Flanged process heaters for liquid and gasses fore zone 1 in presence of hydrogen and other gasses, according to PED directive and ATEX directive;
- \ Inline process heaters suitable for hazardous area zone 1 in presence of hydrogen and other gasses, designed according to PED directive and ATEX directive.







DhE Srl



via Fossa, 22
31051 Follina (TV) - Italy

tel. +39 0438 971865
fax +39 0438 971866

info@dhersrl.com
dhersrl.com