

ELVARME

ATEX



FAN HEATERS

NEWTRONIC

MFH-SA SAFE AREA FAN HEATERS

EXHEAT Industrial's MFH-SA Safe Area Fan Heater uses a patented design (GB1614657.3) that combines efficiency with simple functionality to provide a portable heating solution for industrial areas. The Safe Area Fan Heater comes ready to 'plug and play' with the option of fitting a plug, or hard wiring to an isolator unit.

Using adjustable feet, the heater can be angled to allow for flexibility in its positioning and, with its compact design, can be easily stored or transported. Additionally, the Safe Area Fan Heater comes with a three position switch that gives the option of running the heater with or without the elements energised. There is also the option of fitting a room thermostat locally to the heater (fixed ambient) at an additional cost.

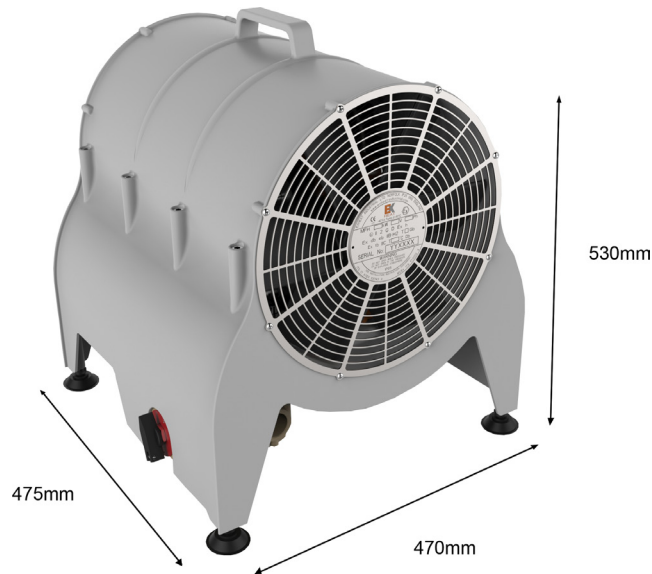


FEATURES

- Can be supplied on a long flying lead to get heat where you need it.
- Up to 15kW.
- The Safe Area design increases efficiency, providing a warmer flow of air for the operator at up to 5m.
- Suitable for ambient temperatures as low as -40°C and up to +60°C.

TYPICAL APPLICATIONS

- Container heating
- Dairies
- Engine bay
- Equipment rooms
- Greenhouses
- Living quarters
- Pump stations
- Ships
- Storage units
- Wet rooms
- Workshops



Dimensions	L475 x W470 x H530mm. Base weight 25kg
Main Materials	Casing: PA66 Impeller: PA66 Elements: Finned stainless steel tubular elements Enclosure: Stainless steel Motor Housing: Epoxy coated aluminium
Mounting	Adjustable feet at each corner allow for a stable standing on uneven surfaces. Wall mounting bracket option and anti-static castors available.
Rating	Up to 15kW
Voltage	Single-Phase: 110 to 120VAC, 220 to 277VAC Three-Phase: 380 to 480VAC, 600 to 690VAC

Performance Data	At 50 Hz	At 60 Hz
Average Air Velocity (m/s)	8.3	9.5
Volumetric Flow Rate (m ³ /hr)	2010	2690
Fan Speed (min ⁻¹)	2680	3120
Motor Rating (kW)	0.18	0.18
Sound Pressure (dBA)	78	81

Model	Nominal Output (kW)	Voltage (V)	Max Current (A)	Phase	Outlet Temp. (°C) (Delta T) - up to
MFH-SA-6-110	6/7.1	110/120	62	1	23.7
MFH-SA-6-240	5/6.7	220/254	31	1	22.4
MFH-SA-15-440	11.1/17.8	380/440	25	3	59.5
MFH-SA-15-690	11.3/15	690	14	3	54.3

LFH FIXED FAN HEATER

EXHEAT Industrial's LFH Fixed Fan Heater combines superior efficiency with simple functionality to provide a next-generation heating solution for use in hazardous environments where the atmosphere is classified as Zone 1/2 (IIB+H2).

Certified to the new EN 80079-36 and EN 80079-37 standards for constructional safety, the LFH comes ready to 'plug and play', with the option of fitting a plug, or hard wiring to an isolator unit.

Incorporating a stainless steel casing for added toughness and durability, the LFH is designed to operate in ambient temperatures of -40°C to +40°C, and uses a framework allowing for multiple mounting options on floors, walls, and even ceilings.

FEATURES

Robust stainless steel housing suitable for onshore and offshore usage, including offshore marine installations, gas installations, aircraft hangars, munition stores, spray shops, battery stores, fuel servicing areas, portable washdown heaters and many more.

Up to 20kW (40kW with EXHEAT Advanced Controls) of thermal power can be directed to heat areas within a larger room, or warm a mid-sized room to a comfortable operating temperature.

Suitable for ambient temperatures as low as -40°C and up to +40°C.

Available in T3 and T4 temperature classes.



	At 50Hz		At 60Hz	
Performance Data	LFH	XLFH	LFH	XLFH
Air Velocity m/s (average)	5.5	6	6.6	7.2
Volumetric Flow Rate (m³/hr)	1950	3050	2340	3660
Fan Speed (min⁻¹)	1380	1380	1460	1460
Motor Rating (kW)	0.55	1.1	0.55	1.1
Sound Pressure (dBA)	78	83	80	85

Certification

ATEX

II 2 G D Ex h
Ex db eb IIB+H2 T3...T4 Gb
Ex tb IIIC T200°C...T135°C Db

IECEX

Ex db eb h IIB+H2 T3...T4 Gb
Ex tb IIIC T200°C...T135°C Db

CU TR (EAC)

1Ex db e IIB+H2 T4...T3 Gb X
Ex tb IIIC T135°C...T200°C Db X

Main Materials

Casing: Stainless steel
Impeller: PA66
Element: Finned stainless steel tubular elements
Ex e Enclosure: Stainless steel
Ex d Enclosure: Anodised extruded aluminium

Mounting

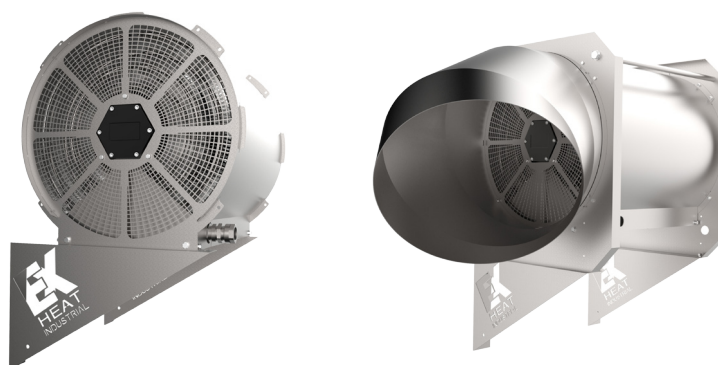
Floor, wall, or ceiling mounting options available as standard

Dimensions

LFH: L540mm, W600mm, H600mm
XLFH: L690mm, W720mm, H680mm

Voltage

Three Phase, 380V to 690V, 50 /60Hz



Model	Voltage (V)	Duty (kW)	Maximum Current (A) ²	Air Delta T (°C/°F) ³
LFH - T4	440	9	13	26 / 47
	415	8	12	23 / 41
	400	7.5	12	22 / 40
	380	6.5	10	19 / 34
	230 (3Ph)	7.5	12	22 / 40
	Up to 690 ¹	Up to 9	Based on Voltage	Up to 26 / 47
LFH - T3	440	15	21	38 / 68
	415	13.5	20	34 / 61
	400	12.5	19	32 / 58
	380	11	18	28 / 50
	230 (3Ph)	12.5	33	32 / 58
	Up to 690 ¹	Up to 15	Based on Voltage	Up to 38 / 68
LFH - T2	Up to 690	24	Up to 38	TBC
LFH-C with Advanced Controls	Up to 690	24	38	TBC

Model	Voltage (V)	Duty (kW)	Maximum Current (A) ²	Air Delta T (°C/°F) ³
XLFH-T4	440	14.5	20	32 / 58
	415	13	19	29 / 52
	400	12	18	26 / 47
	380	11	17	24 / 43
	230 (3Ph)	12	32	26 / 47
	Up to 690 ¹	Up to 14.5	Based on Voltage	Up to 37 / 64
XLFH-T3	440	24	32	46 / 82
	415	21.5	31	41 / 74
	400	20	30	38 / 68
	380	18	28	34 / 61
	230 (3Ph)	20	55	38 / 68
	Up to 690 ¹	Up to 24	Based on Voltage	Up to 46 / 82
XLFH-T2	Up to 690	40	Up to 63	TBC
XLFH-C with Advanced Controls	Up to 690	40	63	TBC

1. LFH and XLFH fan heaters are also available in 480V, 600V and 690V options.

2. Maximum currents include motor inrush.

3. Air Delta T values taken at outlet.



ELVARME

VORES PRODUKTSORTIMENT INKLUDERER:



THE BULLDOG



AIR DUCT HEATERS



TEMPERATURE CONTROL



ROBUST - DEMANDING EVIROMENTS



KX 2 - SMALL AND PORTABLE



ATEX

VI FØRER PRODUKTER INDENFOR KATEGORIERNE:



AUTOMATIK



**HVAC & BYGNINGS-
AUTOMATIK**



KØLEPROFILER

NEWTRONIC

Ove Jensens Alle 35 F
DK-8700 Horsens
Denmark
www.newtronic.eu
www.newtronic.dk
+45 7669 7090