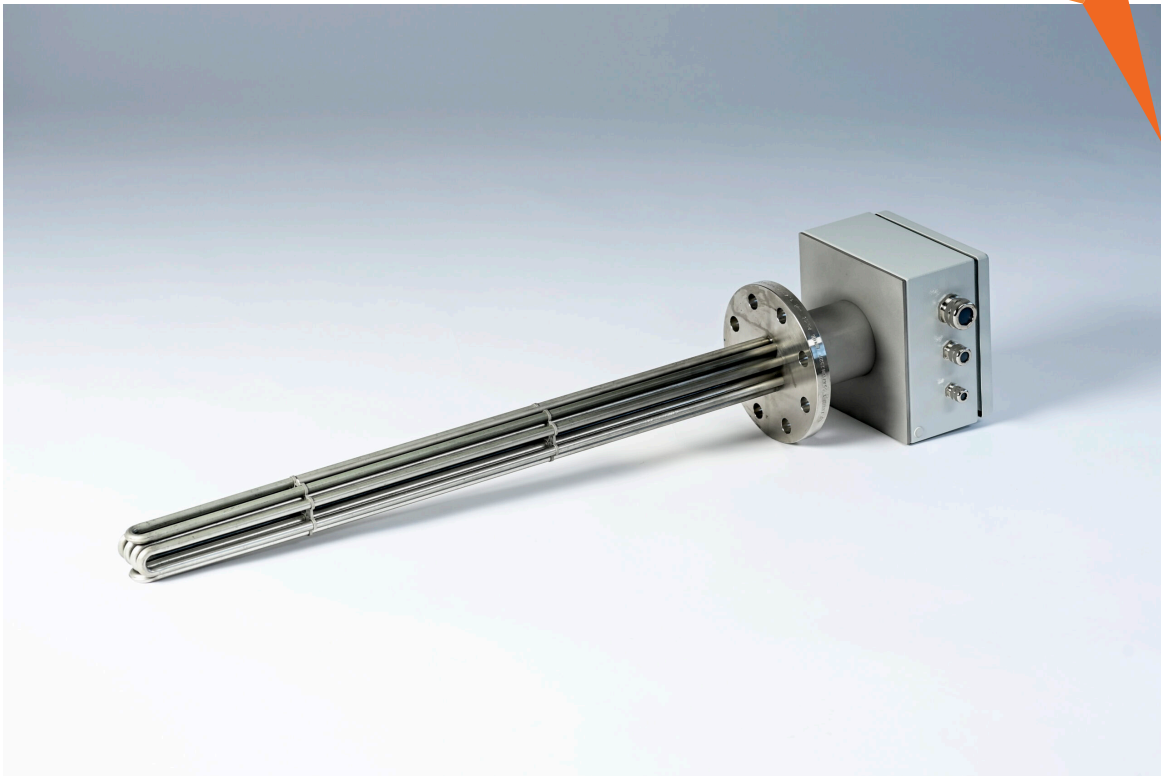


FLANGEVARMELEGEMER



**FLANGEVARMELEGEMER
STANDARD**

FLANGE HEATERS

for efficient heating of water in the power range from 10 to 320kW

The flange heater standard series was developed by Newtronic to offer industrial customers a robust electrical heating solution. In addition to the classic customer-specific heaters, Newtronic sets a standard in the process experiences of the last 20 years. Together with the matching regulation it enables the customer to have a stable heating process with almost 100% efficiency!

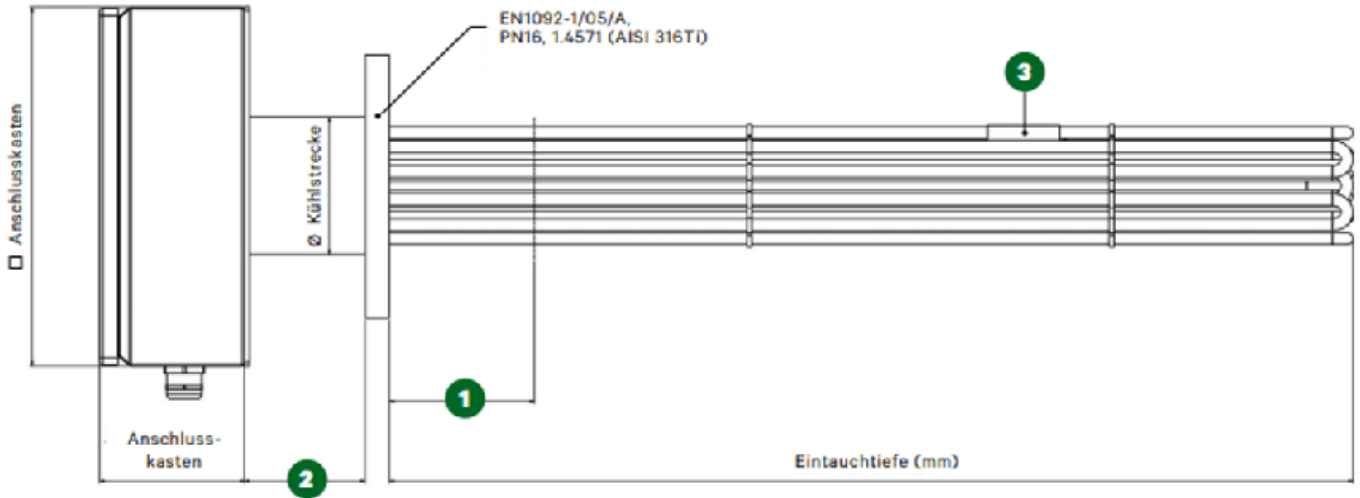
The heaters can either be flanged directly into an existing tank or in a dedicated flow pipe. On request, Newtronic can also deliver the right solution in vertical or horizontal Execution. The heating elements are 10 mm made of stainless steel AISI 316L with a wall thickness of 0.7 mm, particularly suitable in industrial processes.

The heaters are monitored by a safety temperature limiter and switch off when the temperature is too high. The PT100 temperature sensor is used to regulate the heater. Newtronic can also offer suitable thyristor controls etc..

Construction data records, such as connection and circuit diagrams, CAD files (step-file) or the technical drawing are immediately available on request and already support the user in the construction phase.

PRODUKTMERKMALE SSFHK-SERIE

Medium	Wasser, Wasser-Glykol-Gemisch (weitere: nach Absprache)		
min./max. zul. Temperatur (°C)	+5°C/+110°C	Heizelement	Rohrheizkörper RHK Ø 10 mm
Anschlussspannung (V)	400 3~	Oberflächenbelastung (Watt/cm²)	max. 7,89
Schaltung	Dreieck	Heizelement Werkstoff	1.4404 – AISI 316 L
Leistungstoleranz (%)	+5/-10	Unbeheizte Länge (mm)	1 120
Designdruck max. (bar ü)	10	Toleranz Eintauchtiefe (mm)	max. +5/-20
Prüfdruck (bar ü)	14,3	Heizelement Verschluss	Araldit
Einbaulage	waagrecht	Kühlstrecke (mm)	2 100
Flansch Werkstoff	1.4571 – AISI 316 Ti	Temperaturbegrenzer	STB DR 20–150°C (1-pol.)
Flansch Norm	EN1092-1/05/A	Temperaturfühler	3 PT100 3-Leiter „B“
Anschlusskasten Werkstoff	Stahl lackiert (RAL 7035)	Auslegung und Fertigung nach	DGRL 2014/68/RU, AD2000
Schutzart	IP55	Zolltarif-Nr.	8516 1080
Anschlussklemmen	WDU/PVB		



AUSFÜHRUNGSVARIANTEN

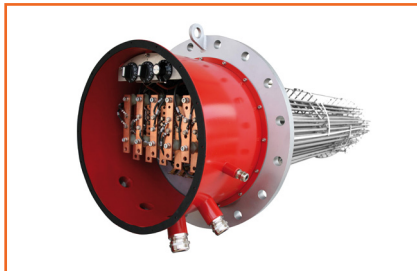
Artikel-Nr.	Leistung kW	Schaltstufen	Eintauchtiefe mm	Flanschgröße	Anzahl RHK	Anschlusskasten mm	Gewicht ca. kg	Preise in €					Artikel-Nr. Steuerung
								1 Stk.	2 Stk.	3 Stk.	5 Stk.	10 Stk.	
180001	10	1	800	DN50	3	□ 200 x 120	9	1.208,-	1.049,-	997,-	954,-	923,-	104087
180002	12	1	950	DN50	3	□ 200 x 120	9	1.239,-	1.081,-	1.028,-	986,-	954,-	103581
180003	15	1	1150	DN50	3	□ 200 x 120	10	1.243,-	1.085,-	1.032,-	990,-	958,-	103581
180004	20	1	1500	DN50	3	□ 200 x 120	11	1.279,-	1.121,-	1.068,-	1.026,-	994,-	104088
180005	20	1	800	DN65	6	□ 200 x 120	12	1.370,-	1.186,-	1.133,-	1.091,-	1.059,-	104088
180006	24	1	950	DN65	6	□ 200 x 120	13	1.425,-	1.241,-	1.189,-	1.146,-	1.115,-	104088
180007	30	1	1150	DN65	6	□ 200 x 120	14	1.446,-	1.262,-	1.209,-	1.167,-	1.136,-	104069
180008	36	1	950	DN100	9	□ 200 x 120	17	1.655,-	1.471,-	1.418,-	1.376,-	1.344,-	104069
180009	40	1	1500	DN65	6	□ 200 x 120	16	1.510,-	1.326,-	1.273,-	1.231,-	1.200,-	104069
180010	40	2	800	DN100	12	□ 300 x 120	21	1.735,-	1.577,-	1.499,-	1.456,-	1.425,-	115482
180011	45	1	1150	DN100	9	□ 300 x 120	22	1.716,-	1.532,-	1.479,-	1.437,-	1.405,-	104070
180012	48	1	950	DN100	12	□ 300 x 120	22	1.811,-	1.653,-	1.574,-	1.532,-	1.501,-	104070
180013	60	1	1500	DN100	9	□ 300 x 120	25	1.810,-	1.626,-	1.573,-	1.531,-	1.499,-	104090
180014	60	2	1150	DN100	12	□ 300 x 120	25	1.861,-	1.703,-	1.624,-	1.582,-	1.550,-	110062
180015	60	2	800	DN125	18	□ 300 x 120	28	2.108,-	1.924,-	1.871,-	1.803,-	1.771,-	110062
180016	72	2	950	DN125	18	□ 300 x 120	30	2.195,-	2.011,-	1.959,-	1.891,-	1.859,-	110062
180017	80	2	1500	DN100	12	□ 300 x 120	29	1.973,-	1.815,-	1.736,-	1.694,-	1.663,-	110062
180018	80	4	800	DN150	24	□ 380 x 210	41	2.454,-	2.225,-	2.172,-	2.104,-	2.073,-	115484
180019	90	2	1150	DN125	18	□ 380 x 210	39	2.268,-	2.084,-	2.031,-	1.963,-	1.932,-	110063
180020	96	2	950	DN150	24	□ 380 x 210	43	2.553,-	2.324,-	2.271,-	2.203,-	2.171,-	110063
180021	100	2	800	DN150	30	□ 380 x 210	44	2.711,-	2.508,-	2.429,-	2.387,-	2.329,-	110063
180022	120	1	1500	DN125	18	□ 380 x 210	44	2.423,-	2.239,-	2.187,-	2.119,-	2.087,-	104091
180023	120	2	1150	DN150	24	□ 380 x 210	51	2.750,-	2.521,-	2.468,-	2.400,-	2.368,-	115485
180024	120	5	950	DN150	30	□ 380 x 210	51	2.845,-	2.642,-	2.563,-	2.521,-	2.464,-	115220
180025	120	4	800	DN200	36	□ 380 x 210	55	3.168,-	2.900,-	2.821,-	2.779,-	2.721,-	115221
180026	144	1	950	DN200	36	□ 380 x 210	56	3.304,-	3.036,-	2.957,-	2.915,-	2.857,-	104091
180027	150	1	1150	DN150	30	□ 380 x 210	51	2.938,-	2.735,-	2.656,-	2.614,-	2.556,-	104091
180028	160	1	1500	DN150	24	□ 380 x 210	53	2.836,-	2.607,-	2.554,-	2.486,-	2.455,-	105520
180029	160	4	800	DN200	48	□ 380 x 210	63	3.732,-	3.445,-	3.347,-	3.279,-	3.221,-	115222
180030	180	1	1150	DN200	36	□ 380 x 210	62	3.374,-	3.106,-	3.028,-	2.986,-	2.928,-	104092
180031	192	1	950	DN200	48	□ 380 x 210	65	3.887,-	3.599,-	3.502,-	3.433,-	3.376,-	104092
180032	200	1	1500	DN150	30	□ 380 x 210	59	3.128,-	2.925,-	2.846,-	2.804,-	2.746,-	104092
180033	240	6	1500	DN200	36	□ 500 x 210	90	3.771,-	3.503,-	3.425,-	3.382,-	3.325,-	115223
180034	240	1	1150	DN200	48	□ 500 x 210	81	4.093,-	3.806,-	3.708,-	3.640,-	3.582,-	106179
180035	320	8	1500	DN200	48	□ 500 x 210	111	4.583,-	4.295,-	4.197,-	4.129,-	4.072,-	115224



ELVARME



VORES PRODUKTSORTIMENT INKLUDERER:



FLANGEVARMELEGEMER KUNDEDES.



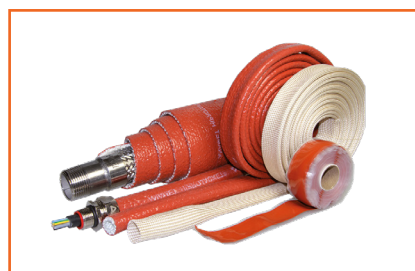
BADVARMERE



LINE HEATERS



ELPATRONER



VARMEBESKYTTENDE PRODUKTER



FLANGEVARMELEGEMER

VI FØRER PRODUKTER INDENFOR KATEGORIERNE:



AUTOMATIK



**HVAC & BYGNINGS-
AUTOMATIK**



KØLEPROFILER



NEWTRONIC

Ove Jensens Alle 35 F
DK-8700 Horsens
Denmark
www.newtronic.eu
www.newtronic.dk
+45 7669 7090

