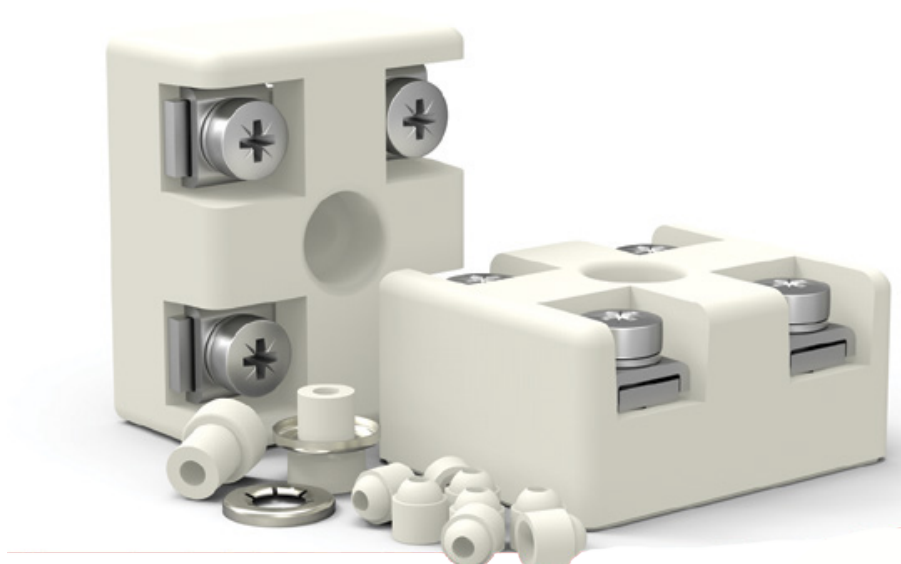


**INFRARØDE VARMEKAKLER**

---

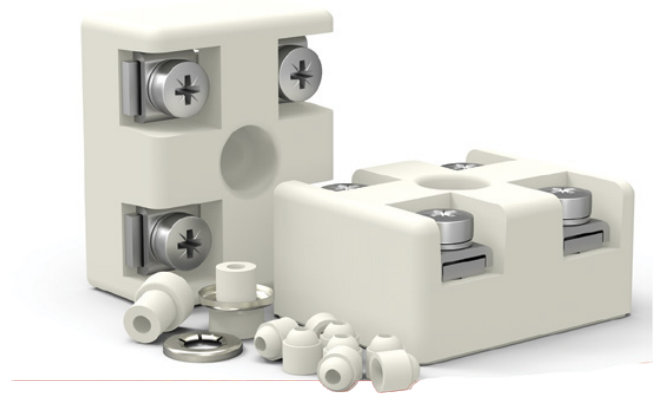


**ACCESORIES**

# ACCESSORIES

Ceramicx manufactures a range of accessories, including steatite press components.

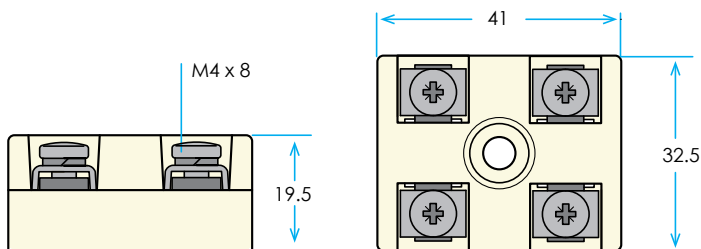
Steatite ceramic dust has proven itself to be the material-of-choice for the manufacture of electrical insulators thanks to its good mechanical strength, ideal dielectric properties and high temperature resistivity of up to 1000°C



All dimensions mm Tolerances apply

## CERAMIC TERMINAL BLOCKS

### 2P Ceramic terminal block Stainless steel fittings, body Steatite C-221



Maximum voltage: 500 V

Maximum temperature: 450 °C

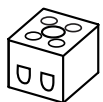
Maximum current: 20 A\*

Maximum cable CSA (solid): 4.0 mm sq.

Maximum cable CSA (stranded/with ferrule) 2.5 mm sq.

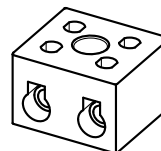
\*Up to 30A permissible at lower temperatures.

### 2P Mini Ceramic terminal block



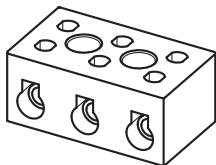
Nickel galvanised brass inserts.  
Zinc plated steel screws.  
21 x 18 x 15 mm

### TB2 Ceramic terminal block



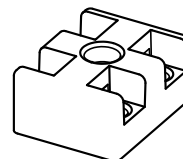
Plated brass inserts.  
Nickel galvanised screws.  
34 x 30 x 22 mm

### TB3 Ceramic terminal block



Plated brass inserts.  
Nickel galvanised screws.  
51 x 30 x 22 mm

### 2P Ceramic terminal block no fittings

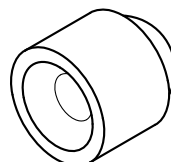
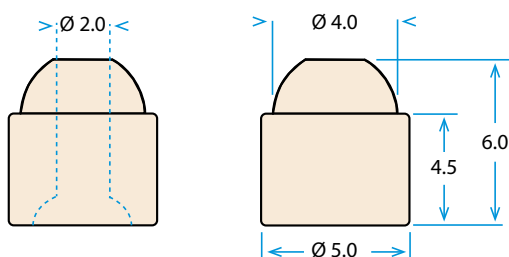


41 x 32.5 x 9.5 mm

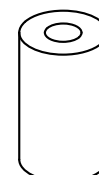
## CERAMIC BEADS

### Ceramic beads 1 Kg bag

Material: Steatite C-221

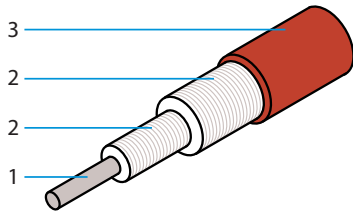


### Ceramic tubes



Ø5 x 11.5 mm  
Material: Steatite C-221

**High temperature NPC cable**

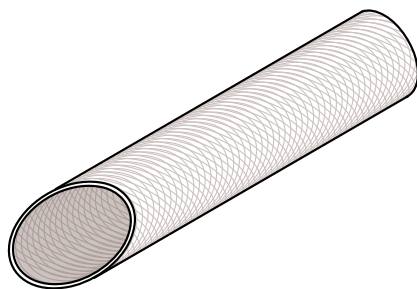


- 1. Flexible nickel plated copper core
- 2. Multiple silicone-impregnated glass lapping
- 3. Silicone - coated fibreglass braid

Continuous working temperature: -60°C to +280°C  
 Peaks at 350°C  
 Working voltage: 300/500V

Nominal core cross-section	Nominal core stranding	Outer cable diameter	Linear weight approx
0.75 mm <sup>2</sup>	11 x 0.30	2.4 mm	11.9 kg/km
1.50 mm <sup>2</sup>	21 x 0.30	2.8 mm	20.5 kg/km
2.50 mm <sup>2</sup>	35 x 0.30	3.2 mm	32.2 kg/km
4.00 mm <sup>2</sup>	56 x 0.30	4.0 mm	50.1 kg/km

**Fibre glass braided sleeving**

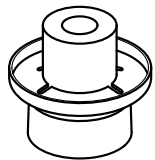


Fibre glass braided sleeving non-impregnated  
 Continuous working temperature: -60°C to +450°C



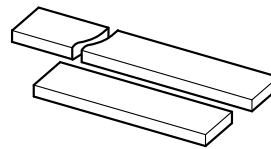
Nominal Inner diameter	Min. wall thickness	Linear weight approx
2 mm	0.20	3.10 kg/km
4 mm	0.30	7.60 kg/km
6 mm	0.30	12.00 kg/km

**Grommet set**



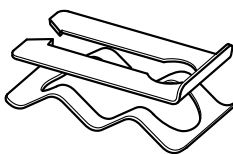
Ceramic grommet and star-lock fastener set, used as insulator in sheet metal with 6mm hole  
 9.5 x 7.5 mm

**Stainless steel buss bar**



Used with the ceramic terminal block to produce a flexible power distribution system  
 8 x 2 x 1000 mm

**Steel wave and spring clip**



Used in the mounting and installation of all Ceramic and pillared quartz elements

**R7s ceramic holder**

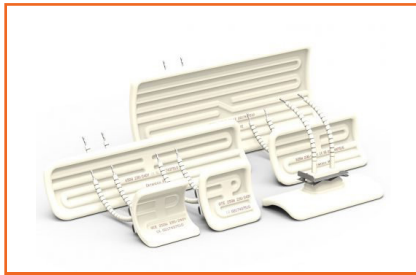


For standard quartz tungsten tubes and quartz halogen tubes



**ELVARME**

## VORES PRODUKTSORTIMENT INKLUDERER:



**CERAMIC ELEMENTS**



**FAST IR-SYSTEMS**



**GENNEMSTRØM STANDARD**



**HIJD**



**PANEL HEATERS**



**INFRARØDE VARMEKAKLER**

## VI FØRER PRODUKTER INDENFOR KATEGORIERNE:



**AUTOMATIK**



**HVAC & BYGNINGS-  
AUTOMATIK**



**KØLEPROFILER**

**NEWTRONIC**

Ove Jensens Alle 35 F  
DK-8700 Horsens  
Denmark  
[www.newtronic.eu](http://www.newtronic.eu)  
[www.newtronic.dk](http://www.newtronic.dk)  
+45 7669 7090