

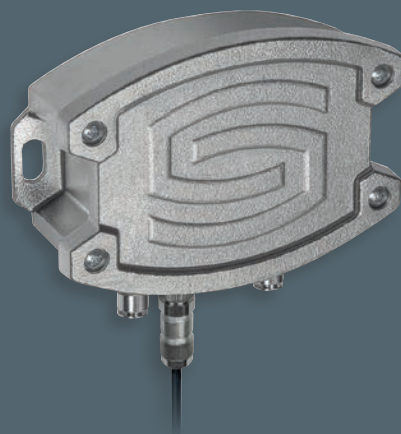


S+S REGELTECHNIK



PREMASREG[®] PREMASGARD[®]

PRESSURE SENSORS / CONTROLLERS / SWITCHES
MEASURING TRANSDUCERS FOR
DIFFERENTIAL PRESSURE AND VOLUME FLOW



PRODUCT RANGE 2024



FÜHLBARE PRÄZISION

PREMASREG® FOR VOLUME FLOW



Device variant with
M12 connector
(optional on request)



Volume flow rate

$$V = k \cdot \sqrt{\Delta p}$$

V = Volume flow in m³/h

k = K factor 1...3000

Δp = Differential pressure in Pa



Differential pressure

$$\Delta p = p_+ - p_-$$

Δp = Differential pressure in Pa

p₊ = higher pressure

p₋ = lower pressure



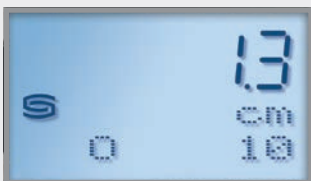
Filter contamination

$$S = 100\% \cdot \Delta p \div P_{Filter}$$

S = Contamination degree in %

Δp = Differential pressure in Pa

P_{Filter} = differential pressure
filter replacement in Pa



Level display

$$h = \Delta p \div (\rho \cdot g)$$

h = Fill level height in cm

Δp = Differential pressure in Pa

ρ = Density 700...1300 in kg/m³

g = 9.81 m/s²



PREMASREG® 716x
with display

286,49 €



Device versions in
stainless steel housing Tyr2E
see online shop

The **PREMASREG® 716x** electronic pressure sensor and switch is equipped with measuring functions for volume flow, differential pressure, filter monitoring and liquid level detection based on pressure measurement in clean air. The devices feature one switching and one continuous output as well as a backlit display for switchpoint setting and indication of actual values.

The piezo-resistive measuring element guarantees a high degree of reliability and accuracy. The technology is used in clean room, medical and filter technology, in ventilation and air conditioning ducts, in spray booths, in large-scale catering facilities, for monitoring filters, for level measurement or for triggering frequency converters. Measured media are air (non-condensing) or other non-aggressive, non-combustible gaseous compounds.

PREMASREG® 716x has a manual zero point pushbutton and an offset potentiometer for final value correction. Fine adjustment by the user is possible at any time. Parameter entry is menu-based and easily performed using three buttons with the help of the display. Delivery includes one **ASD-06** connection set.

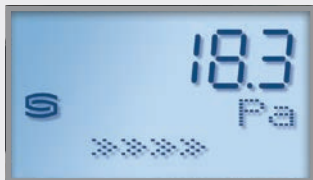
All devices are produced at our factory and are calibrated and 100% tested at our test benches and pressure chambers.

PREMASREG® 716x Pressure measuring transducer/control switches for volume flow, differential pressure, filter monitoring and liquid level detection, *Deluxe*



Measuring Range Pressure / Volume Flow	Type / WG02 Housing Tyr 2	IP / Display	Item No. Output 0-10 V	Price
0...1000 Pa				
k=3000 94800 m³/h	PREMASREG 7161-UW LCD	IP 65 ■	1302-7161-4161-200 1x Changeover contact	286,49 €
0...5000 Pa				
k=3000 212100 m³/h	PREMASREG 7165-UW LCD	IP 65 ■	1302-7161-4171-200 1x Changeover contact	286,49 €

Automatic zero point calibration



actual pressure (in Pa)
calibration interval (arrows)



remaining calibration time
(in seconds)



cycle time (15 min to 24 hours)
adjustable by potentiometer

PREMASGARD® & PREMASREG® FOR GASEOUS MEDIA



PREMASGARD® 7111
without display

173,13 €

PREMASREG® 7111 - U / W
with display and changeover contact

247,87 €

NEW



PREMASREG® 7227
Dual pressure sensor
with display

286,16 €



PREMASGARD® 711x
PREMASREG® 711x

Pressure and differential pressure measuring transducers ($\pm 1.5\%$), *Deluxe*
Pressure and differential pressure measuring transducers/switches ($\pm 1.5\%$), *Deluxe*



Pressure Range (adjustable)	Type / WG02 Housing Tyr 2	IP / Display	Item No. Output 4...20mA	Item No. Output 0-10V	Price
max. - 1000...+ 1000 Pa	(x = I / U)		I-variant	U-variant	
0... 100 Pa / - 100...+ 100 Pa	PREMASGARD 7111-x	IP65	1301-7112-0010-100	1301-7111-0010-200	173,13 €
0... 300 Pa / - 300...+ 300 Pa	PREMASGARD 7111-x LCD	IP65 ■	1301-7112-4010-100	1301-7111-4010-200	242,89 €
0... 500 Pa / - 500...+ 500 Pa	PREMASREG 7111-UW LCD	IP65 ■	-	1302-7111-4011-200	247,87 €
0... 1000 Pa / -1000...+ 1000 Pa				1x Changeover contact	
max. - 5000...+ 5000 Pa	(x = I / U)				
0...1000 Pa / -1000...+ 1000 Pa	PREMASGARD 7115-x	IP65	1301-7112-0050-100	1301-7111-0050-200	173,13 €
0...2000 Pa / -2000...+ 2000 Pa	PREMASGARD 7115-x LCD	IP65 ■	1301-7112-4050-100	1301-7111-4050-200	242,89 €
0...3000 Pa / -3000...+ 3000 Pa	PREMASREG 7115-UW LCD	IP65 ■	-	1302-7111-4051-200	247,87 €
0...5000 Pa / -5000...+ 5000 Pa				1x Changeover contact	
max. -100...+100 Pa	(x = I / U)				
0... +50 Pa / -50... +50 Pa	PREMASGARD 7110-x	IP65	1301-7112-0110-100	1301-7111-0110-200	217,98 €
0...+100 Pa / -100...+100 Pa	PREMASGARD 7110-x LCD	IP65 ■	1301-7112-4110-100	1301-7111-4110-200	280,26 €
max. -25...+25 Pa	(x = I / U)				
0... +25 Pa / -25... +25 Pa	PREMASGARD 7112-x	IP65	1301-7112-0370-200	1301-7111-0370-200	279,01 €
	PREMASGARD 7112-x LCD	IP65 ■	1301-7112-4370-200	1301-7111-4370-200	330,34 €
	Equipped as standard with automatic zero point calibration (3-wire connection)				
Extra charge:	Other special measuring ranges up to max. 5000 Pa with optional automatic zero point calibration				51,32 € 74,74 €

PREMASGARD® 722x

Dual pressure sensor (2 measuring channels),
Pressure and differential pressure transducer, *Deluxe*



Pressure range (adjustable per channel)	Type / WG02 Housing Tyr 2	IP / Display	Output (automatic)	Item No.	Price
(1) max. - 7000...+ 7000 Pa (2) max. - 7000...+ 7000 Pa	Dual pressure sensor		AOS		
0... 1000 Pa / -1000... + 1000 Pa	PREMASGARD 7227	IP65	0-10V / 4...20mA	1301-712A-0950-200	235,94 €
0... 3000 Pa / -3000... + 3000 Pa	PREMASGARD 7227 LCD	IP65 ■	0-10V / 4...20mA	1301-712A-4950-200	286,16 €
0... 5000 Pa / -5000... + 5000 Pa					
0... 7000 Pa / -7000... + 7000 Pa					
(1) max. - 500... + 500 Pa (2) max. - 500... + 500 Pa	Dual pressure sensor		AOS		
0... 100 Pa / - 100... + 100 Pa	PREMASGARD 7225	IP65	0-10V / 4...20mA	1301-712A-0910-200	235,94 €
0... 200 Pa / - 200... + 200 Pa	PREMASGARD 7225 LCD	IP65 ■	0-10V / 4...20mA	1301-712A-4910-200	286,16 €
0... 300 Pa / - 300... + 300 Pa					
0... 500 Pa / - 500... + 500 Pa					
(1) max. - 500... + 500 Pa (2) max. - 7000...+ 7000 Pa	Dual pressure sensor		AOS		
see above	PREMASGARD 7229	IP65	0-10V / 4...20mA	1301-712A-0930-200	235,94 €
	PREMASGARD 7229 LCD	IP65 ■	0-10V / 4...20mA	1301-712A-4930-200	286,16 €



PREMASGARD® 2121-SD
with snap-on lid

140,58 €



PREMASGARD® 2111
without display

156,67 €



PREMASGARD® 2121-SD
with display

190,62 €



PREMASGARD®
232x-Modbus-T3
without display

208,96 €

PREMASGARD®
232x-Modbus-T3
with display

262,89 €

PREMASGARD® 212x-SD		Pressure, differential pressure and volume flow measuring transducers, <i>Standard</i>		
PREMASGARD® 211x / 212x		Pressure, differential pressure and volume flow measuring transducers, <i>Premium</i>		
Pressure range (adjustable)	Type / WG01 Housing Tyr 1 with quick-locking screws Type SD = Tyr 01 with snap-on lid	IP / Display	Item No. Output (adjustable) 4...20mA / 0-10V	Price
max. - 1000...+ 1000 Pa				
0... 100 Pa / - 100...+ 100 Pa	PREMASGARD 2111	IP67	1301-1197-0010-000	156,67 €
0... 300 Pa / - 300...+ 300 Pa	PREMASGARD 2111 LCD	IP67 ■	1301-1197-2010-000	208,82 €
0... 500 Pa / - 500...+ 500 Pa	PREMASGARD 2121	IP67	1301-11A7-0010-000	156,67 €
0... 1000 Pa / -1000...+ 1000 Pa	PREMASGARD 2121 LCD	IP67 ■	1301-11A7-2010-000	208,82 €
	PREMASGARD 2121-SD	IP54	1301-11B7-0010-000	140,58 €
	PREMASGARD 2121-SD LCD	IP54 ■	1301-11B7-2010-000	190,62 €
max. - 5000...+ 5000 Pa				
0...1000 Pa / -1000...+ 1000 Pa	PREMASGARD 2115	IP67	1301-1197-0050-000	156,67 €
0...2000 Pa / -2000...+ 2000 Pa	PREMASGARD 2115 LCD	IP67 ■	1301-1197-2050-000	208,82 €
0...3000 Pa / -3000...+ 3000 Pa	PREMASGARD 2125	IP67	1301-11A7-0050-000	156,67 €
0...5000 Pa / -5000...+ 5000 Pa	PREMASGARD 2125 LCD	IP67 ■	1301-11A7-2050-000	208,82 €
	PREMASGARD 2125-SD	IP54	1301-11B7-0050-000	140,58 €
	PREMASGARD 2125-SD LCD	IP54 ■	1301-11B7-2050-000	190,62 €
max. - 100...+ 100 Pa				
0... 50 Pa / - 50...+ 50 Pa	PREMASGARD 2110	IP67	1301-1197-0110-000	156,67 €
0...100 Pa / -100...+ 100 Pa	PREMASGARD 2110 LCD	IP67 ■	1301-1197-2110-000	208,82 €
	PREMASGARD 2120	IP67	1301-11A7-0110-000	156,67 €
	PREMASGARD 2120 LCD	IP67 ■	1301-11A7-2110-000	208,82 €
	PREMASGARD 2120-SD	IP54	1301-11B7-0110-000	140,58 €
	PREMASGARD 2120-SD LCD	IP54 ■	1301-11B7-2110-000	190,62 €
max. - 10000...+ 10000 Pa				
0... 4000 Pa / - 4000...+ 4000 Pa	PREMASGARD 2116	IP67	1301-1197-0060-000	177,88 €
0... 6000 Pa / - 6000...+ 6000 Pa	PREMASGARD 2116 LCD	IP67 ■	1301-1197-2060-000	230,03 €
0... 8000 Pa / - 8000...+ 8000 Pa	PREMASGARD 2126	IP67	1301-11A7-0060-000	177,88 €
0...10000 Pa / -10000...+ 10000 Pa	PREMASGARD 2126 LCD	IP67 ■	1301-11A7-2060-000	230,03 €
	PREMASGARD 2126-SD	IP54	1301-11B7-0060-000	161,79 €
	PREMASGARD 2126-SD LCD	IP54 ■	1301-11B7-2060-000	211,83 €
PREMASGARD® 232x-Modbus-T3		Pressure and differential pressure measuring transducers		
Pressure range	Type / WG01 Housing Tyr 3	IP / Display	Item No. Output RS485	Price
- 500...+ 500 Pa				
-500...+ 500 Pa	PREMASGARD 2328-Modbus-T3	IP65	1301-12C4-0910-200	208,96 €
	PREMASGARD 2328-Modbus-T3 LCD	IP65 ■	1301-12C4-4910-200	262,89 €
- 7000...+ 7000 Pa				
-7000...+ 7000 Pa	PREMASGARD 2327-Modbus-T3	IP65	1301-12C4-0950-200	208,96 €
	PREMASGARD 2327-Modbus-T3 LCD	IP65 ■	1301-12C4-4950-200	262,89 €



**PREMASGARD®
714x-Modbus**
On-wall sensor
for differential pressure
and volume flow,
without display

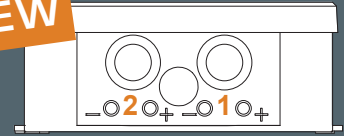
360,92 €



**PREMASGARD®
814x-Modbus**
Duct sensors for humidity,
temperature, differential
pressure and volume flow,
with display

519,73 €

NEW



**PREMASGARD®
724xT-Modbus**
Dual pressure sensor with
connection option for
external Pt1000 sensor,
with display

348,07 €

**PREMASGARD®
724x-Modbus**
Dual pressure sensor,
without display

262,80 €



PREMASGARD® 714x-Modbus		On-wall sensor for differential pressure and volume flow, <i>Deluxe</i>			
PREMASGARD® 814x-Modbus		Duct sensor for humidity, temperature, differential pressure and volume flow, <i>Deluxe</i>			
Measuring ranges pressure	Humidity Temperature	Type / WG02 Housing Tyr 2	IP / Display	Item No. Output RS485	Price
- 500...+ 500 Pa with automatic zero point calibration					
-500...+ 500 Pa	-	PREMASGARD 7148-Modbus	IP 65	1301-7164-0910-20V	419,32 €
		PREMASGARD 7148-Modbus LCD	IP 65 ■	1301-7164-4910-20V	466,04 €
- 500...+ 500 Pa 0...100% RH -35...+80°C					
		PREMASGARD 8148-Modbus	IP 65	1301-8144-0910-20V	531,80 €
		PREMASGARD 8148-Modbus LCD	IP 65 ■	1301-8144-4910-20V	580,77 €
- 7000...+ 7000 Pa ohne automatische Nullpunktkalibrierung					
- 7000...+ 7000 Pa -					
		PREMASGARD 7147-Modbus	IP 65	1301-7164-0950-200	360,92 €
		PREMASGARD 7147-Modbus LCD	IP 65 ■	1301-7164-4950-200	407,64 €
- 7000...+ 7000 Pa 0...100% RH -35...+80°C					
		PREMASGARD 8147-Modbus	IP 65	1301-8144-0950-200	470,15 €
		PREMASGARD 8147-Modbus LCD	IP 65 ■	1301-8144-4950-200	519,73 €
Extra charge: with optional automatic zero point calibration					74,74 €

PREMASGARD® 724x-Modbus		Dual pressure sensor (2 measuring channels) for differential pressure and volume flow, <i>Deluxe</i>			
Pressure range (adjustable per channel)	Type / WG02 Housing Tyr 2	IP / Display	Item No. Output RS485	Price	
(1) max. - 7000...+ 7000 Pa (2) max. - 7000...+ 7000 Pa Dual pressure sensor					
0 ... 1000 Pa / - 1000 ... + 1000 Pa	PREMASGARD 7247-Modbus	IP 65	1301-7224-0950-200	262,80 €	
0 ... 3000 Pa / - 3000 ... + 3000 Pa	PREMASGARD 7247-Modbus LCD	IP 65 ■	1301-7224-4950-200	313,03 €	
0 ... 5000 Pa / - 5000 ... + 5000 Pa	PREMASGARD 7247T-Modbus	IP 65	1301-7224-0950-2W0	297,85 €	
0 ... 7000 Pa / - 7000 ... + 7000 Pa	PREMASGARD 7247T-Modbus LCD	IP 65 ■	1301-7224-4950-2W0	348,07 €	
(1) max. - 500... + 500 Pa (2) max. - 500... + 500 Pa Dual pressure sensor					
0 ... 100 Pa / - 100 ... + 100 Pa	PREMASGARD 7245-Modbus	IP 65	1301-7224-0910-200	262,80 €	
0 ... 200 Pa / - 200 ... + 200 Pa	PREMASGARD 7245-Modbus LCD	IP 65 ■	1301-7224-4910-200	313,03 €	
0 ... 300 Pa / - 300 ... + 300 Pa	PREMASGARD 7245T-Modbus	IP 65	1301-7224-0910-2W0	297,85 €	
0 ... 500 Pa / - 500 ... + 500 Pa	PREMASGARD 7245T-Modbus LCD	IP 65 ■	1301-7224-4910-2W0	348,07 €	
(1) max. - 500... + 500 Pa (2) max. - 7000...+ 7000 Pa Dual pressure sensor					
see above	PREMASGARD 7249-Modbus	IP 65	1301-7224-0930-200	262,80 €	
	PREMASGARD 7249-Modbus LCD	IP 65 ■	1301-7224-4930-200	313,03 €	
	PREMASGARD 7249T-Modbus	IP 65	1301-7224-0930-2W0	297,85 €	
	PREMASGARD 7249T-Modbus LCD	IP 65 ■	1301-7224-4930-2W0	348,07 €	
Housing variant "T":		Connection facility for external Pt1000 sensor (sensor element not included in the scope of delivery)			

PREMASGARD® & PREMASREG®

FOR ATMOSPHERIC PRESSURE /
FOR DIFFERENTIAL PRESSURE (MECHANICAL)



ALD
for atmospheric pressure

172,75 €



ALD with display
for atmospheric pressure

203,72 €



DS 1 with mounting angle,
mechanical

54,80 €



DS 2 with mounting ring,
mechanical

36,16 €

PREMASGARD® ALD measures the atmospheric pressure within a range of max. 600 to 1100 hPa. Areas of application for this pressure sensor include ventilation and air conditioning technology, air pressure dependent control systems, meteorological measurement stations and climate observation units. The pressure sensor excels thanks to its high accuracy, long-term stability and reliability.

As mechanical differential pressure switches, **PREMASREG® DS 1** (with metal mounting angle) and **PREMASREG® DS 2** (with 4-hole plastic base ring) are used for monitoring above-atmospheric, differential and below-atmospheric pressures of clean air and non-aggressive, non-combustible gaseous media in air ducts, air intake or exhaust devices. They also serve as flow, differential pressure or pressure monitors for heating registers, V-belts, filters, fans and air flaps, for air pressure deficiency protection or as limiting value controllers. The switchpoint is adjusted using the internal precision scale. These instruments are factory calibrated.

PREMASGARD® ALD Measuring transducers for atmospheric pressure

Measuring Range (adjustable)	Type / WG01 Housing Tyr 1	IP / Display	Item No. Output (adjustable) 4...20 mA / 0-10 V	Price
max. 600...1100 hPa	ALD			
600 / 700 / 800 / 900...1100 hPa	ALD	IP 67	1301-1157-0130-200	172,75 €
	ALD LCD	IP 67 ■	1301-1157-2130-200	203,72 €

PREMASREG® DS 1 Mechanical differential pressure switches with mounting angle, *Premium* PREMASREG® DS 2 Mechanical differential pressure switches with mounting ring, *Standard*

Type	Pressure range (adjustable)	Operating Difference approx.	Max. Pressure	Item No.	Price
DS 1 / WG02	<i>Premium</i>			with mounting angle DS-MW-Z	
DS-106	20... 300 Pa (0.2...3.0 mbar)	0.1 mbar ± 15 %	5000 Pa (50 mbar)	1302-4011-0000-000	54,80 €
DS-106 A	50... 500 Pa (0.5...5.0 mbar)	0.2 mbar ± 15 %	5000 Pa (50 mbar)	1302-4012-0000-000	54,80 €
DS-106 B	100...1000 Pa (1.0...10.0 mbar)	0.4 mbar ± 15 %	5000 Pa (50 mbar)	1302-4013-0000-000	54,80 €
DS-106 C	500...2000 Pa (5.0...20.0 mbar)	1.0 mbar ± 15 %	5000 Pa (50 mbar)	1302-4014-0000-000	54,80 €
DS-106 D	1000...5000 Pa (10.0...50.0 mbar)	2.5 mbar ± 15 %	7500 Pa (75 mbar)	1302-4015-0000-000	54,80 €
DS 2 / WG03B	<i>Standard</i>			with mounting ring	
DS-205 F	20... 300 Pa (0.2...3.0 mbar)	0.1 mbar ± 15 %	5000 Pa (50 mbar)	1302-4026-0000-000	36,16 €
DS-205 B	50... 500 Pa (0.5...5.0 mbar)	0.2 mbar ± 15 %	5000 Pa (50 mbar)	1302-4022-0000-000	36,16 €
DS-205 D	100...1000 Pa (1.0...10.0 mbar)	0.4 mbar ± 15 %	5000 Pa (50 mbar)	1302-4027-0000-000	36,16 €
DS-205 E	500...2000 Pa (5.0...20.0 mbar)	1.0 mbar ± 15 %	5000 Pa (50 mbar)	1302-4028-0000-000	36,16 €
ACCESSORIES					
DS-MW-Z	Sheet steel mounting angle in Z-form (DS 1: included in the scope of delivery)			7100-0063-0000-000	13,76 €
DS-MW-L	Sheet steel mounting angle in L-form			7100-0063-1000-000	14,08 €
DS-MW-U	Sheet steel mounting angle in U-form			7100-0060-9000-000	17,31 €

PREMASGARD® FOR LIQUID MEDIA



SHD-SD
incl. DIN receptacle

133,75 €



SHD
incl. DIN receptacle

159,97 €



SHD-SD LCD
incl. DIN receptacle

417,12 €



SHD 692
incl. DIN receptacle
and mounting angle

363,38 €



SHD 692 LCD
incl. DIN receptacle
and mounting angle

646,76 €

PREMASGARD® SHD-SD PREMASGARD® SHD

Pressure measuring transducers, *Standard* – Not applicable for ammonia and Freon!
Pressure measuring transducers, *Premium* – Applicable for ammonia and Freon!

Measuring Range	Type / WG01	Display	Item No. Output 0-10V	Item No. Output 4...20mA	Price
	SHD-SD-x = U / I		U - variant	I - variant	
0... 6 bar	SHD-SD-x 6		1301-2121-0550-120	1301-2122-0550-000	133,75 €
	SHD-SD-x 6 LCD	■	1301-2121-1550-120	1301-2122-1550-000	417,12 €
0... 10 bar	SHD-SD-x 10		1301-2121-0560-120	1301-2122-0560-000	133,75 €
	SHD-SD-x 10 LCD	■	1301-2121-1560-120	1301-2122-1560-000	417,12 €
0... 16 bar	SHD-SD-x 16		1301-2121-0570-120	1301-2122-0570-000	133,75 €
	SHD-SD-x 16 LCD	■	1301-2121-1570-120	1301-2122-1570-000	417,12 €
	SHD-x = U / I		U - variant	I - variant	
0... 1 bar	SHD-x 1		1301-2111-0520-220	1301-2112-0520-120	220,94 €
	SHD-x 1 LCD	■	1301-2111-1520-220	1301-2112-1520-120	504,32 €
0... 2.5 bar	SHD-x 2.5		1301-2111-0530-220	1301-2112-0530-120	220,94 €
	SHD-x 2.5 LCD	■	1301-2111-1530-220	1301-2112-1530-120	504,32 €
0... 6 bar	SHD-x 6		1301-2111-0550-220	1301-2112-0550-120	159,97 €
	SHD-x 6 LCD	■	1301-2111-1550-220	1301-2112-1550-120	443,34 €
0... 10 bar	SHD-x 10		1301-2111-0560-220	1301-2112-0560-120	159,97 €
	SHD-x 10 LCD	■	1301-2111-1560-220	1301-2112-1560-120	443,34 €
0... 16 bar	SHD-x 16		1301-2111-0570-220	1301-2112-0570-120	159,97 €
	SHD-x 16 LCD	■	1301-2111-1570-220	1301-2112-1570-120	443,34 €
0... 25 bar	SHD-x 25		1301-2111-0580-220	1301-2112-0580-120	220,94 €
	SHD-x 25 LCD	■	1301-2111-1580-220	1301-2112-1580-120	504,32 €
0... 40 bar	SHD-x 40		1301-2111-0590-220	1301-2112-0590-120	220,94 €
	SHD-x 40 LCD	■	1301-2111-1590-220	1301-2112-1590-120	504,32 €

PREMASGARD® SHD 692

Pressure measuring transducers, *Deluxe* – Not applicable for ammonia and Freon!

Measuring Range (One-sided max. pressure)	Type / WG02	Display	Item No. Output 0-10V	Item No. Output 4...20mA	Price
	SHD 692-x = U / I		U - variant	I - variant	
0... 0.1 bar (0.6 bar)	SHD 692-x-900		1301-4121-0500-000	1301-4122-0500-000	363,38 €
	SHD 692-x-900-LCD	■	1301-4121-1500-000	1301-4122-1500-000	646,76 €
0... 0.5 bar (3 bar)	SHD 692-x-907		1301-4121-0510-000	1301-4122-0510-000	363,38 €
	SHD 692-x-907-LCD	■	1301-4121-1510-000	1301-4122-1510-000	646,76 €
0... 1 bar (5 bar)	SHD 692-x-912		1301-4121-0520-000	1301-4122-0520-000	363,38 €
	SHD 692-x-912-LCD	■	1301-4121-1520-000	1301-4122-1520-000	646,76 €
0... 2.5 bar (12 bar)	SHD 692-x-916		1301-4121-0530-000	1301-4122-0530-000	363,38 €
	SHD 692-x-916-LCD	■	1301-4121-1530-000	1301-4122-1530-000	646,76 €
0... 4 bar (12 bar)	SHD 692-x-918		1301-4121-0540-000	1301-4122-0540-000	363,38 €
	SHD 692-x-918-LCD	■	1301-4121-1540-000	1301-4122-1540-000	646,76 €
0... 6 bar (12 bar)	SHD 692-x-919		1301-4121-0550-000	1301-4122-0550-000	363,38 €
	SHD 692-x-919-LCD	■	1301-4121-1550-000	1301-4122-1550-000	646,76 €
0... 10 bar (20 bar)	SHD 692-x-930		1301-4121-0560-000	1301-4122-0560-000	363,38 €
	SHD 692-x-930-LCD	■	1301-4121-1560-000	1301-4122-1560-000	646,76 €



S+S REGELTECHNIK



The new S+S company headquarters on a total area of 14,000m² in Nordostpark on the outskirts of Nuremberg offers a seamlessly integrated production and development environment with excellent air and road links.

S+S stands for a fully integral value chain. All products are designed, developed, manufactured and programmed in-house.

Development, manufacturing and sales in Nuremberg are certified by TÜV Thüringen according to DIN EN ISO 9001:2015 (quality management) and DIN EN ISO 14001:2015 (environmental management).

All devices are function tested as well as calibrated in-house prior to shipment and meet strict safety, quality and sustainability standards.



S+S REGELTECHNIK GMBH
THURN-UND-TAXIS-STR. 22
90411 NUREMBERG / GERMANY

PHONE +49 (0) 911 / 5 19 47-0

mail@SplusS.de
www.SplusS.de

Prices by S+S are understood plus legal value added tax at the respective rate in effect. All information provided without prejudice, technical modifications and price changes reserved. Reprints, even excerpts, are only permitted with the approval of S+S Regeltechnik GmbH.

You can find technical data and further information in our catalogue or web shop.



Order conveniently online: www.SplusS.de